



AIR-COOLED CLOSE CONTROL
AIR CONDITIONER



GREE ELECTRIC APPLIANCES, INC. OF ZHUHAI

Add: West Jinji Rd, Qianshan, Zhuhai, Guangdong, China 519070

Tel: (+86-756) 8522218 Fax: (+86-756) 8669426

Email: gree@gree.com.cn [Http://www.gree.com](http://www.gree.com)

Specifications and appearance are subject to change without notice.

Copyright © Gree Electric Appliances, inc. of Zhuhai. All rights reserved.

GC-1106-01



Outdoor unit: 5~40kW



Indoor unit: 5~40kW

6 Kinds Single Capacity (R22/R410A)

Capacity range:
5kW、7kW、13kW、19kW、25kW、40kW



Dehumidifying range: 2~8kg/h
Heating range: 3~18kW
Air cycle range: 1900~13000m³/h

3 Ways of Air-Flow



Air-cooled Close Control Air Conditioner

GREE JKF air-cooled control air conditioner is dedicated to the equipment room and machinery room that place communication apparatus, computers, precise instruments, etc.

It can achieve efficiency controlling of the ambient temperature and humidity with more precision than normal type of air conditioners, in this way, the long-term stable and continuously run of the unit can be guaranteed.

Two Operation Modes

(1) Self operation

Module Mode Setting				
Module 1	Link	ON	Alone	Auto
Module 2	Break	OFF	Alone	Auto
Module 3	Break	OFF	Alone	Auto
Module 4	Break	OFF	Alone	Auto
Duty Time		90	Day	
Standby Units		0	Unit	
Main Menu	Prev.	Next	Back	Home

(2) Group operation by group controller (optional)

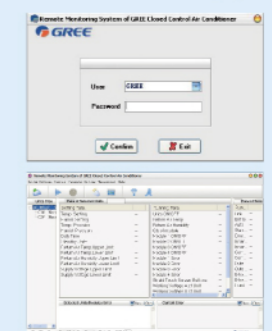
Module Mode Setting				
Module 1	Link	ON	Entire	Auto
Module 2	Link	ON	Entire	Auto
Module 3	Link	ON	Entire	Auto
Module 4	Link	ON	Entire	Auto
Duty Time		180	Day	
Standby Units		0	Unit	
Main Menu	Prev.	Next	Back	Home

Two Controlling Methods

(1) Touch screen controlling(standard) (2) Remote controlling system

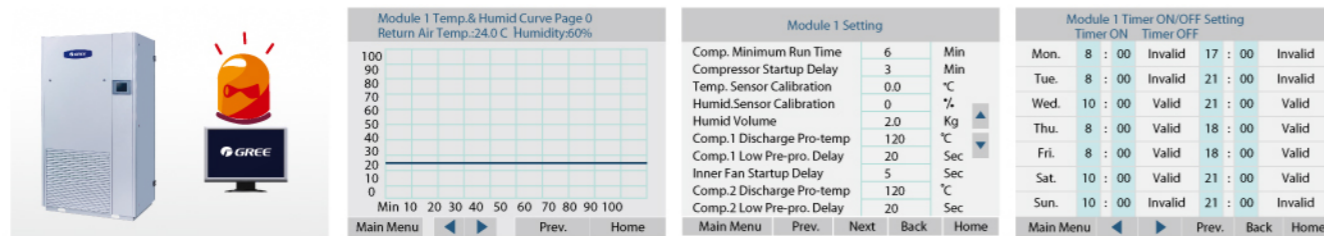


Touch Screen (standard)



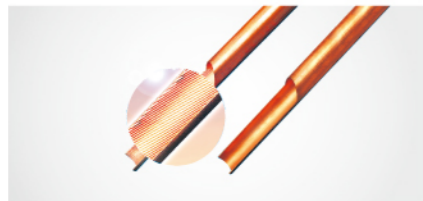
Easy & Powerful Control

- 5.6' touch screen control, convenient operating.
- Multi-function display, displaying model operating status in value, data or curve.
- Entire monitoring, environmental temp or humidity, current and voltage, fire alarm and so on.
- Non-on duty operating, weekly on/off setting, break down memory and resume, long distance and offsite control.



Efficient & Reliable, Care Facilities Perfectly

- Adopt world famous accessories, high efficiency scroll compressor, inner screw cooper tube, hydrophilic aluminum fins, out fan motor stepless adjustment.
- Strict incoming inspection by GREE's unique screening department for each component. Entire operating test by QA before delivery.
- Wide operating range, extra low temp operating at -35°C outdoor. +48°C overload operating.



- High air flow, small enthalpy, high sensible capacity, neutralize ambient temp and humidity, evaporate heating dead angle.

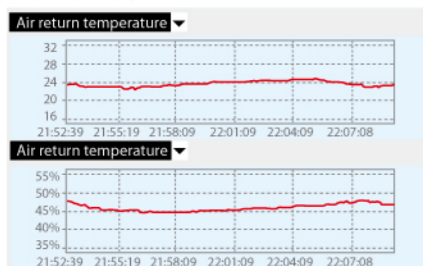


- Rapid dehumidifying: two steps evaporator design, control humidity rapidly.



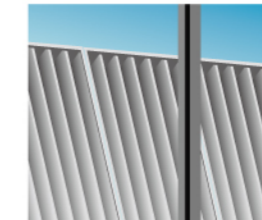
Modular Design, Flexible to Select & Install

- Step control each module, adjust capacity several levels, sensible to used to ambient loading changing, precise control temp and humidity.
- Alternative operating and backup between each module, balanced control.
- Easy transportation and expanded, flexible installation, maximum to control 253units same time.



Human Friendly Design

- Independent electric control, complete separated between electric box and cooled air system, avoid condensing short risk.
- Panel tightly fixed by hook, no screw outside, good appearance, easy disassemble.
- Big high efficient G4 level filter, ensure room's cleanness, decrease air pressure losing.
- ODU adopt upper outlet down return to recycle condensing air, avoid air outlet blocked, consistent with all year around running.



Other Advantages

- Refrigerant flow controlled by EXV, more rapid and precise.
- Direct drive centrifugal fan motor. More high efficiency and flow, lower noise, and compact design.



Gree AC Eudemon 2009 PC Suite

